

# LIQUID marble

Discover your floor.

## What is Liquid Marble?



Don't cover your floor, discover it with Liquid Marble! This easy-to-use flooring system draws out the natural beauty of your concrete in just two coats. It's so simple even DIY types can now - for the first time ever - apply their own stunning resin floors!

Best of all, everything is done using ready-to-mix kits and a spreading tool. You can even apply three different floor finishes: Warehouse Look, Metallic Wash or Liquid Marble.

Liquid Marble is ideal for interior use on all residential, retail and commercial floors, and cures hard to produce a semi-gloss finish in 12 stylish colours.

~ No joins, grout lines or odd cuts ~

~ Seamless, easy-to-clean - wall to wall ~

~ Ideal for residential, retail & commercial ~

~ Entry-level and DIY applicators ~

~ One product, ready to mix ~

## Easy To Choose

### 1. Choose Your Look

Choose one of three different looks:

Warehouse Look



Polished concrete look with subtle metallic shimmer.

Metallic Wash



Translucent finish with striking depth.

Liquid Marble



Very popular soft and subtle metallic design.

### 2. Choose Your Colour

One of 12 stylish colours. See Colour Chart on back.

### 3. Choose Number of Kits

Grab enough kits to complete the job:

Design	1st Coat Coverage*	2nd Coat Coverage*
Warehouse Look	40m <sup>2</sup>	40m <sup>2</sup>
Metallic Wash	20m <sup>2</sup>	40m <sup>2</sup>
Liquid Marble	20m <sup>2</sup>	10m <sup>2</sup>

Example: Liquid Marble in a 20m<sup>2</sup> garage would require a total of 3 kits - 1 x First Coat and 2 x Second Coat.

\* Area covered per full kit. Kits can be split if required. See Instruction Sheet for more application notes.

## Features

- Four-step application - prepare concrete, apply 1st Coat, apply 2nd Coat, wait 24 hours.
- Easy to use - no cuts, wastage or floor height hassles.
- Tough - chemical-proof, stain-proof and can handle heavy of traffic (perfect for a garage makeover).
- Wet areas aren't a problem - can go in bathrooms, kitchens, laundries etc.
- Natural beauty - semi-gloss finish mirrors the natural look of marble.
- Safety - non-slip topcoat available for greater safety.
- Health - contains no solvents, won't slowly release harmful VOCs and doesn't collect dust or allergens.
- Comfort - warmer and not as hard underfoot as tiles.
- Choice - if you change your mind, other colours can easily be applied right over the top!
- Professional installation services available if required.

REAL WORLD  
**epoxies**

Linking industry know how.

Ph: 1300 EPOXIES [www.RealWorldEpoxies.com](http://www.RealWorldEpoxies.com)



# LIQUID marble

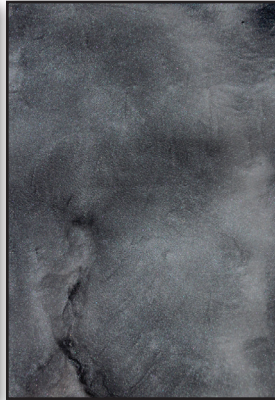
Discover your floor.



**Pearl**



**Iron Grey**



**Basalt**



**Azure**



**Oyster**



**Manilla**



**Flint**



**Oatmeal**



**Sahara**



**Mocha**



**Biscuit**



**Nut Brown**

\*Colours shown on chart are indicative only. Actual colours may differ slightly.