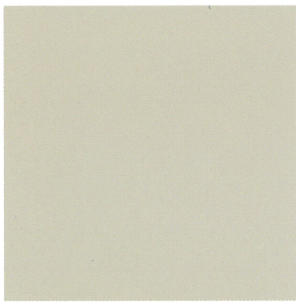


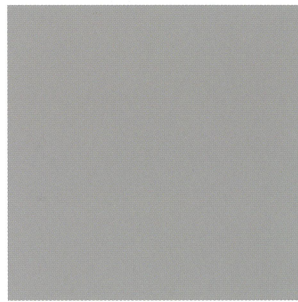
SIKAFLOOR® COLOUR SOLUTIONS

SIKAFLOOR® PURCEM - POLYURETHANE CEMENT FLOORING

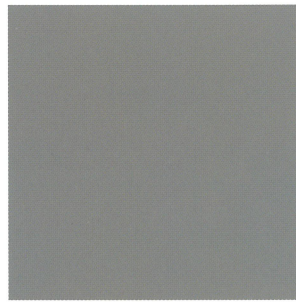
Standard Colours (readily available)



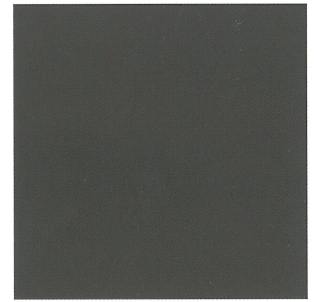
Pebble Grey RAL 7032



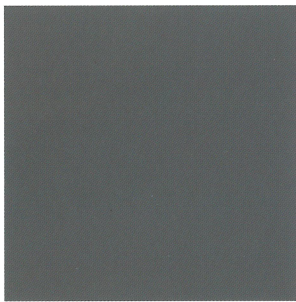
Traffic Grey RAL 7042



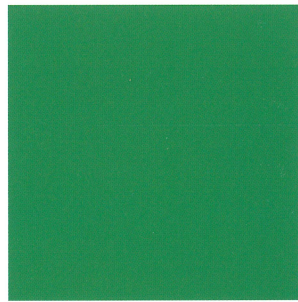
Dusty Grey RAL 7037



Curtain Call



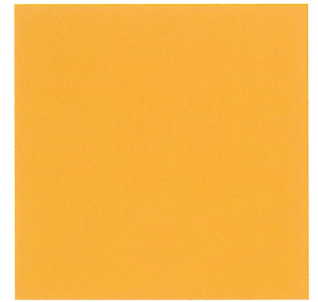
Slate Grey RAL 7015



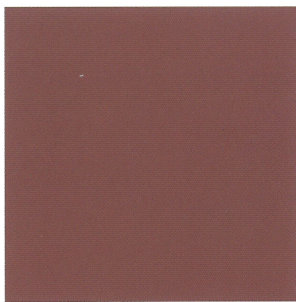
Grass Green RAL 6010



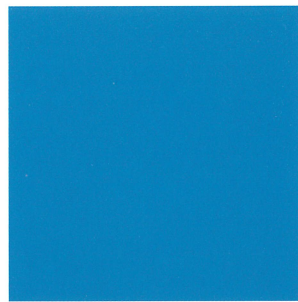
Beige RAL 1001



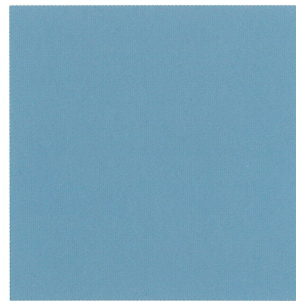
Maize Yellow RAL 1006



Oxide Red RAL 3009



Skye Blue RAL 5015



Pastel Blue RAL 5024



Scan here for product information

COLOUR INDICATIONS

PurCem standard is not UV stable and will discolour on contact with UV light. Sikafloor®-33 PurCem finish coat is required to have full UV stability. Colour indications may vary from actual production standards. Where colour matching is critical, an applied sample is recommended.

Pigment dosage will be dependant on colour selection. Light colours may require additional quantities of pigment. Our technical staff, in conjunction with one of our network of applicators, would welcome the opportunity to inspect your floor and to assist with the design of a suitable Sika Flooring System, tailored to your needs. For further information, please contact your nearest Sika office.

SIKAFLOOR® COLOUR SOLUTIONS



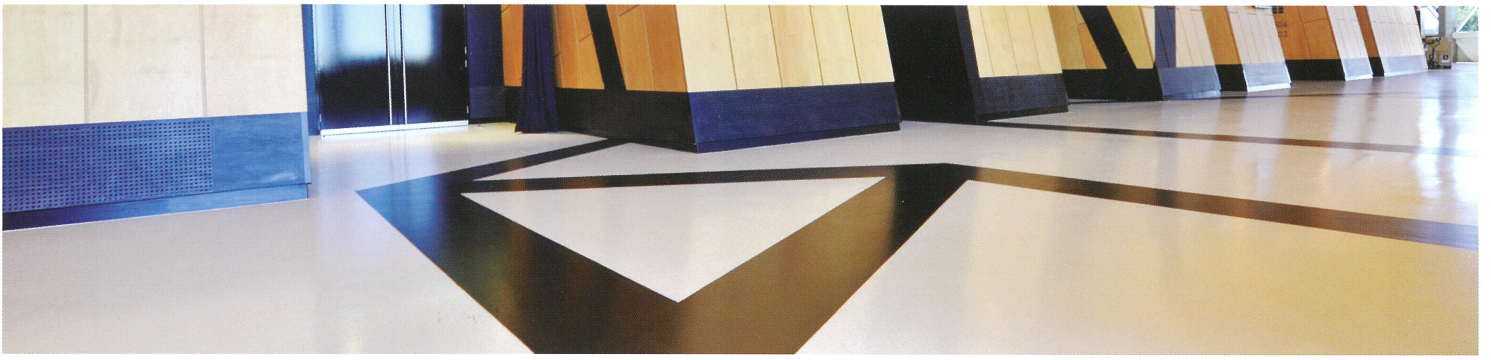
SIKAFLOOR® PURCEM POLYURETHANE CEMENT FLOORING

Why is this a superior flooring option for Food and High Traffic Areas?

SIKAFLOOR PURCEM PRODUCT BENEFITS

- ▶ Fast Cure - minimum down time
- ▶ High impact & abrasion resistance
- ▶ Food Industry approved
- ▶ OH&S Certified AS4586-2004
- ▶ Non food tainting - Non toxic
- ▶ Economical
- ▶ Slip rated
- ▶ Rapid installation
- ▶ Highly durable

For information on Sika's range of flooring products, contact Sika at any time on 1300 22 33 48



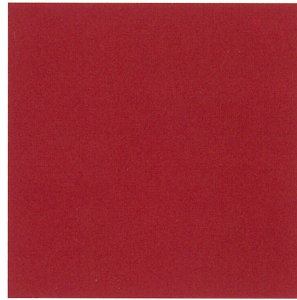
SIKAFLOOR® COLOUR SOLUTIONS

SIKAFLOOR® - EPOXY FLOORING AND PROTECTIVE COATINGS

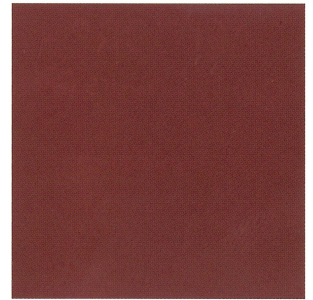
Standard Colours (readily available)



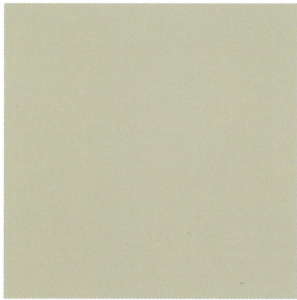
Beige RAL 1001



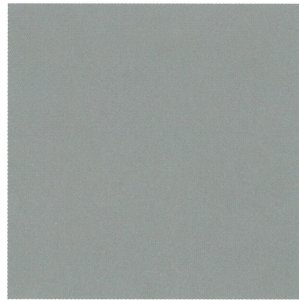
Ruby Red RAL 3003



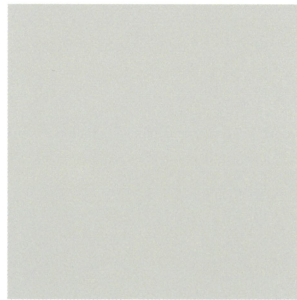
Oxide Red RAL 3009



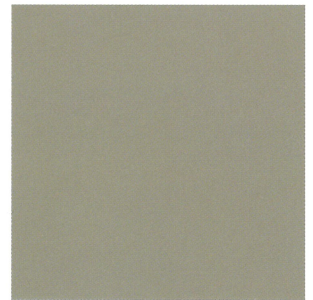
Pebble Grey RAL 7032



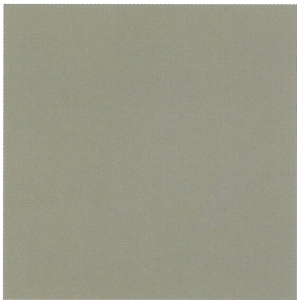
Window Grey RAL 7040



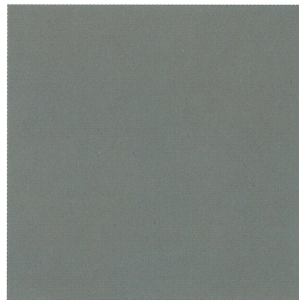
Light Grey RAL 7035



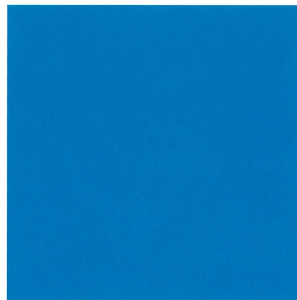
Koala Grey N45



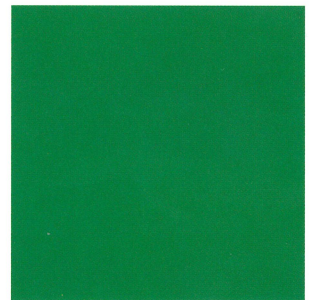
Stone Grey RAL 7030



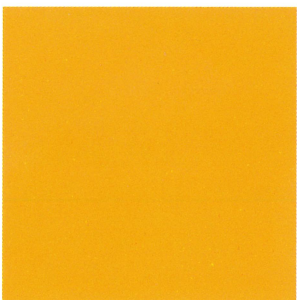
Dusty Grey RAL 7037



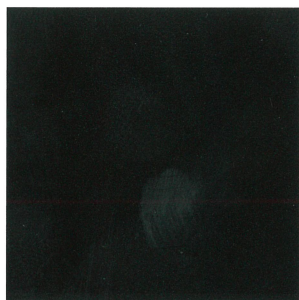
Skye Blue RAL 5015



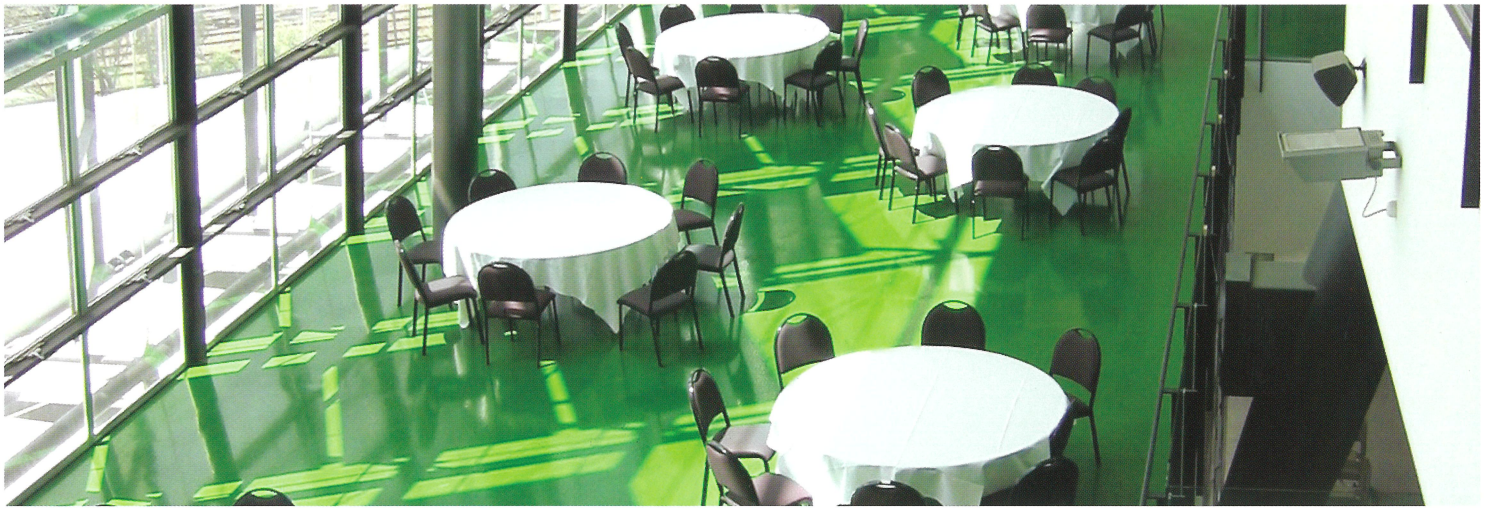
Grass Green RAL 6010



Dahlia Yellow RAL 1033

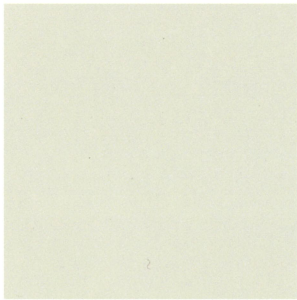


Traffic Black 9017

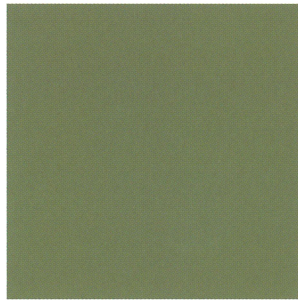


SIKAFLOOR® COLOUR SOLUTIONS

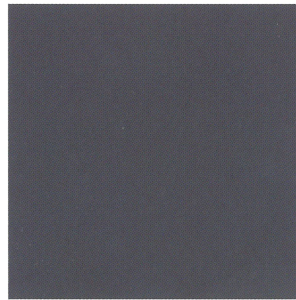
SIKAFLOOR® - EPOXY FLOORING AND PROTECTIVE COATINGS
Specialty Colours (available on request only)



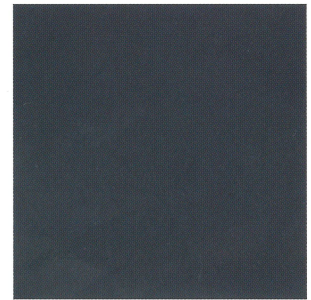
Grey White RAL 9002



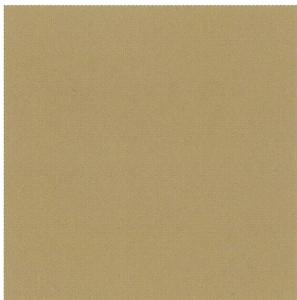
Reed Green RAL 6013



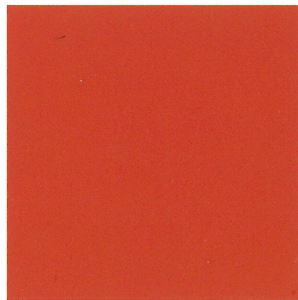
Slate Grey RAL 7015



Anthacite Grey RAL 7016



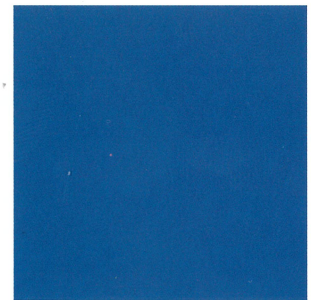
Grey Beige 1019



Red Orange RAL 2001



Pastel Blue RAL 5024



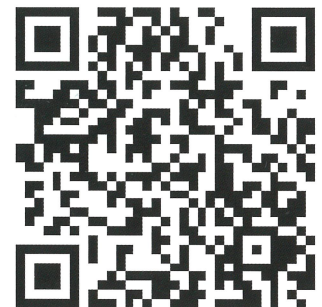
Signal Blue RAL 5005

COLOUR INDICATIONS

Colour indications may vary from actual production standards. Where colour matching is critical, an applied sample is recommended. Custom colours and colour matching are available at an additional cost. Additional lead times are required for custom colours and colour matching.

Pigment dosage will be dependant on colour selection. Light colours may require additional quantities of pigment.

Our technical staff, in conjunction with one of our network of applicators, would welcome the opportunity to inspect your floor and to assist with the design of a suitable Sika Flooring System, tailored to your needs. For further information, please contact your nearest Sika office.



Scan here for product information